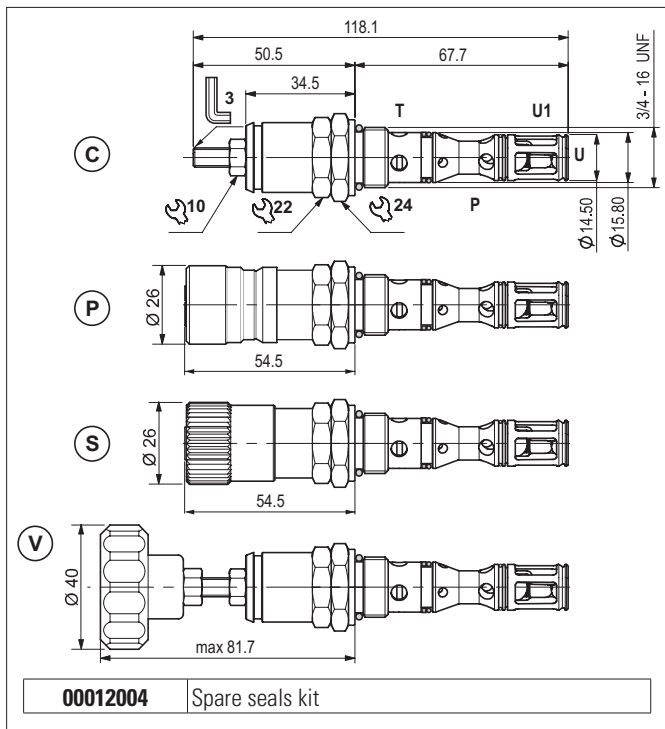


DIRECT ACTING PRESSURE RELIEF VALVES WITH ONE-WAY CHECK VALVE



The valve has a combined function in a single cartridge. It consists of a direct acting maximum pressure valve and a unidirectional check valve. The relief valve raises the safety level by making it impossible for the plant operators to set a higher pressure rating, than that specified in the catalogue. It has a pack spring with a mechanical stop.

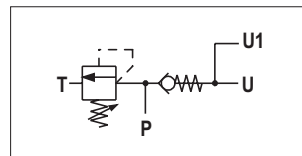
The spring in the check valve enables the cartridge to be mounted in any position.

It has a galvanised steel body. The tapered poppet of the relief valve and the guided ball poppet are made from tempered and ground steel.

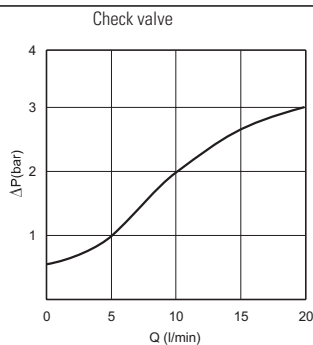
HYDRAULIC FEATURES

Max. opening pressure	320 bar
Max. Flow	20 l/min
Setting ranges (spring)	1 = 10 ÷ 60 bar (green) 2 = > 60 ÷ 180 bar (yellow) 3 = > 180 ÷ 320 bar (blue)
One-way check	0,5 bar (standard)
Check valve leakage (0 ÷ 5 drops/min)	0 ÷ 0.25 cm ³ /min
Hydraulic fluid	DIN 51524 Mineral oils
Fluid viscosity	10 ÷ 500 mm ² /s
Fluid temperature	-25°C ÷ 75°C
Ambient temperature	-25°C ÷ 60°C
Max. contamin. level class with filter	ISO 4406:1999 - class 21/19/16
Weight	0.18 kg
Tightening torque	25 ÷ 30 Nm
Cavity (3/4 - 16 UNF)	CD018013 (See section 15)

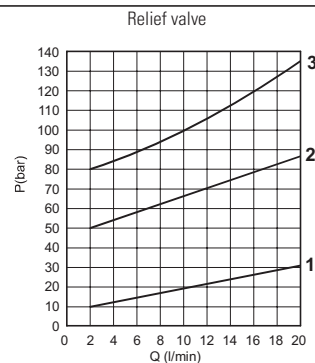
HYDRAULIC SYMBOL



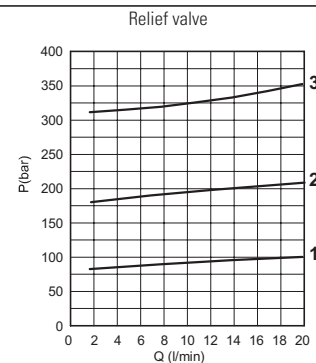
PRESSURE DROPS (P → U)



MIN. SETTING PRESSURE (P → T)



PRESSURE - FLOW (P → T)



Fluid used: mineral based oil with viscosity 32 mm²/s at 50°C.

ORDERING CODE

CMP = Pressure relief valve	Series	R = With check valve	Size	04 = 3/4 - 16 UNF	Setting	*	*	*	00	1	1 = Serial No.
C = With inside hexagonal key wrench		P = With plug no detachable closing (unremovable version)									
S = With plug detachable closing		V = With handwheel									
											00 = No variants
											1 = 10 ÷ 60 bar (green spring) 2 = > 60 ÷ 180 bar (yellow spring) 3 = > 180 ÷ 320 bar (blue spring)
											0 = With standard check-valve S = Without standard check-valve